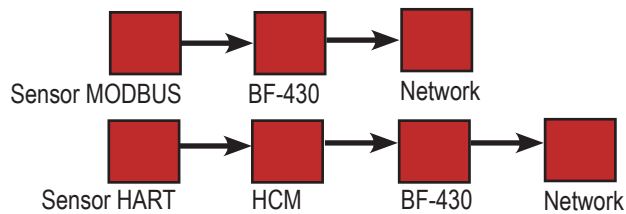
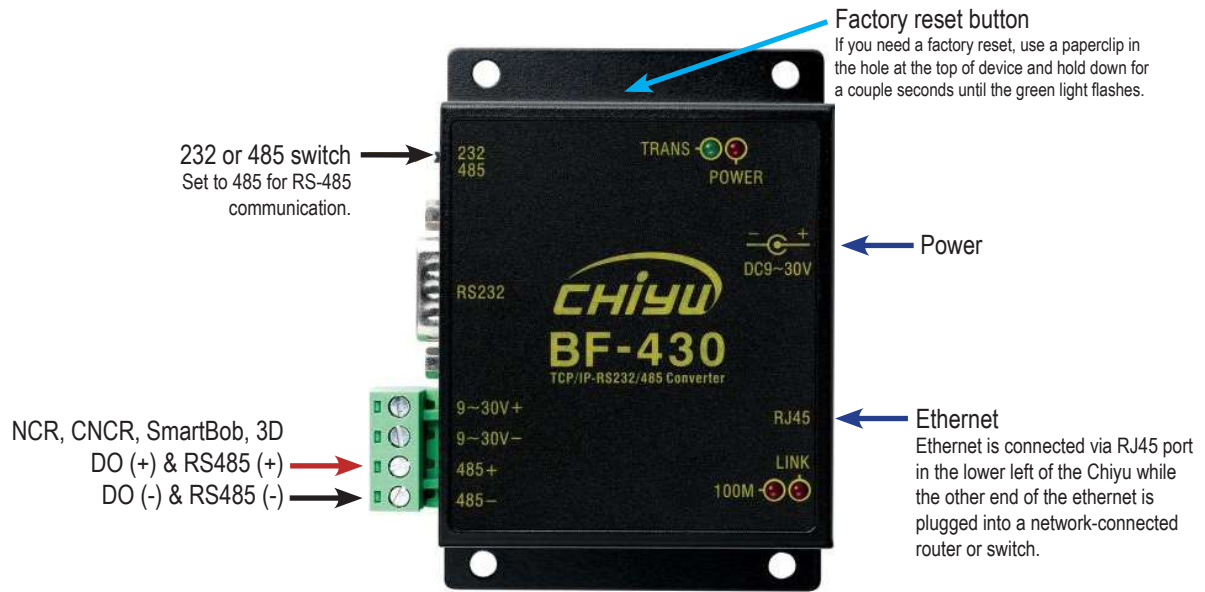




BF-430 Chiyu

Serial to Ethernet Connector Guide

BinMaster sensors send RS-485 packets of data which represent level measurements. The Chiyu BF-430 adapter translates those packets to TCP/IP language for computers and network devices. It's a critical piece of many BinMaster Modbus/RS485/HART systems.



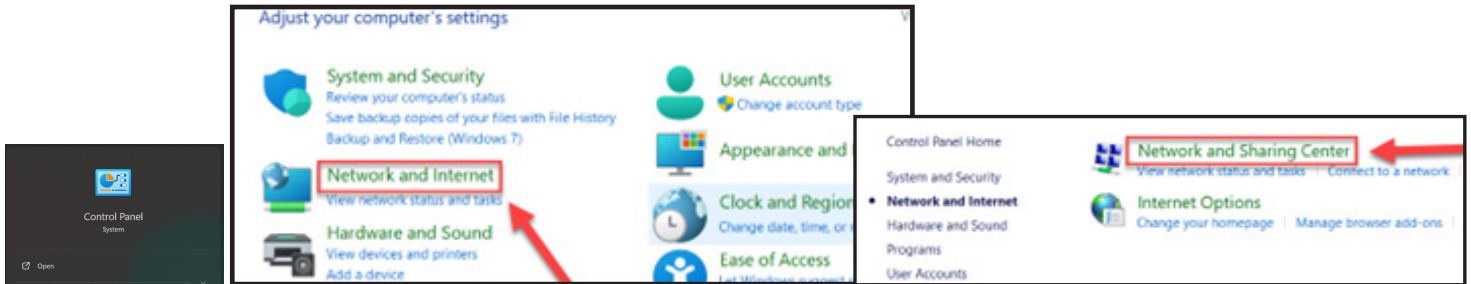
This Quick Start Guide is intended to provide helpful setup and troubleshooting tips. It does not replace or supersede any official BinMaster manuals or documentation. For complete installation and operational guidance, always refer to manufacturer-approved manuals and procedures.

BF-430 Chiyu Serial to Ethernet Connector Guide

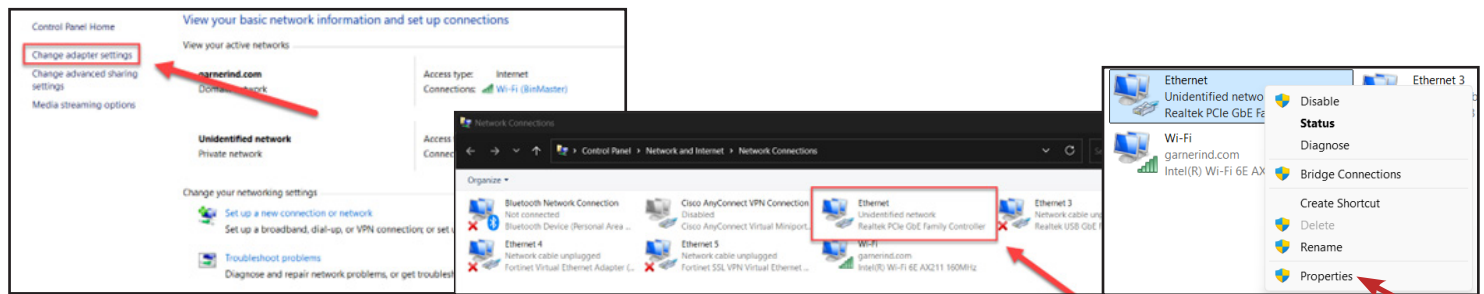
Note: You need admin rights on a PC to setup. Get IP address and network settings from the computer.

1. Power up Chiyu connect ethernet cable from Chiyu to your PC.

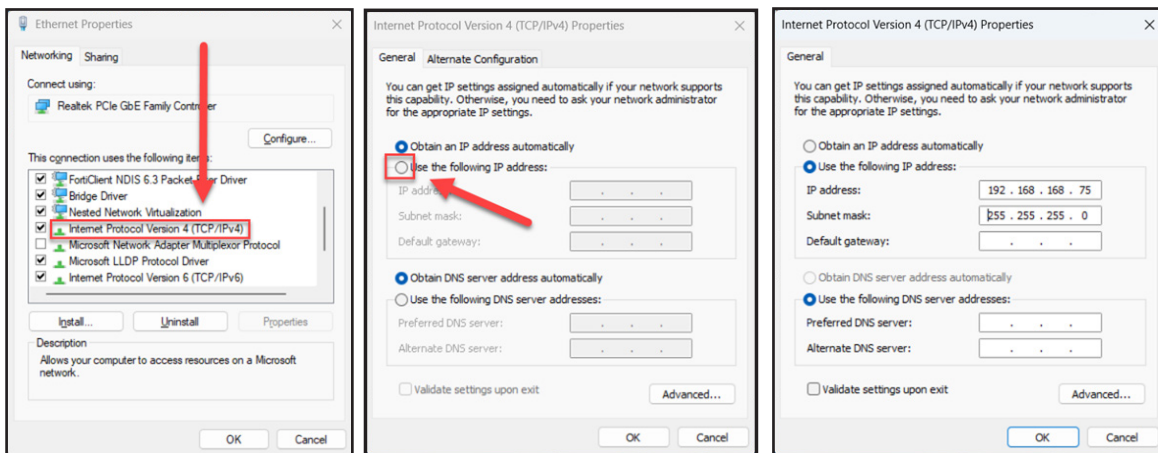
2. Windows>Search Bar>Type Control Panel>Click Network and Internet>Click Network and Sharing Center



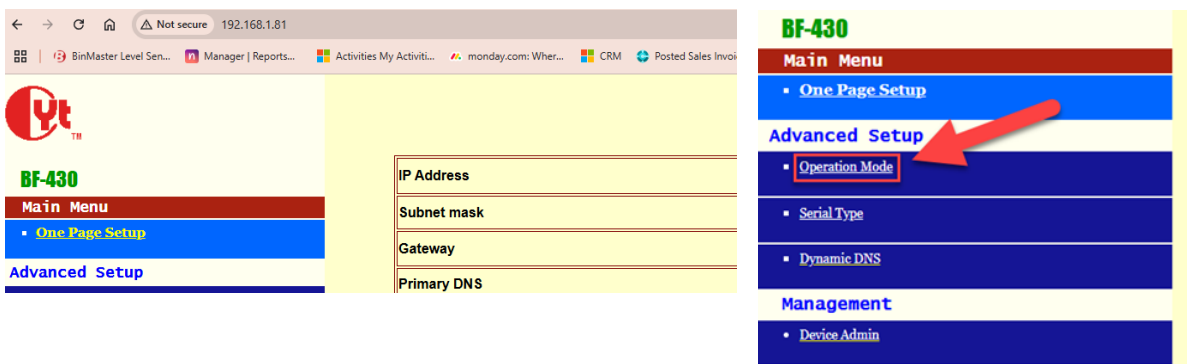
3. Click change adapter settings then right-click the Ethernet port the Chiyu is plugged into. Click properties.



4. Double-click Internet Protocol Version 4 (TCP/IPv4). Click Use the following IP address. Type IP - 192.168.168.75 and Subnet - 255.255.255.0. Use following DNS server addresses - should be blank. Click OK to save settings.



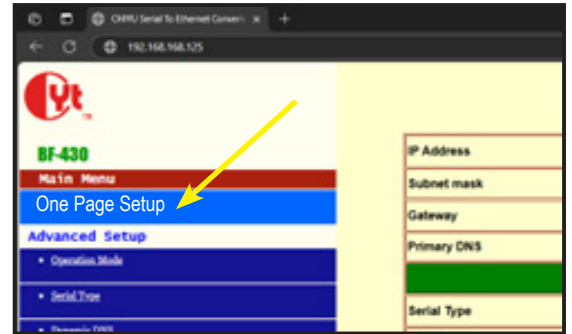
5. Go to your web browser and type 192.168.168.125. User: admin Password: admin Click Operation Mode.



BF-430 Chiyu Serial to Ethernet Connector Guide

6. Close Connection When Remote Idle - 0. Max TCP Connection - 4. Click Apply. Click One Page Setup to return to Main Menu.

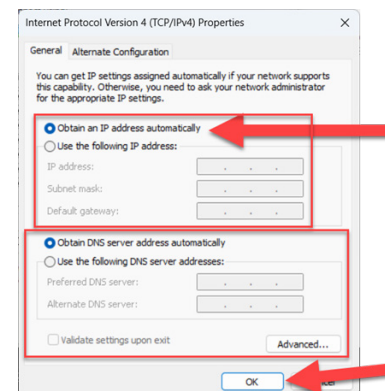
Local Listen Port Number	50000
Close Connection When Remote Idle	0
Access Password	(maxlen 31)
Keep Alive Check	<input checked="" type="radio"/> Disable <input type="radio"/> Enable
Max TCP Connection	4
Real COM	<input type="checkbox"/> ENABLE
Keep the Serial connection open	<input type="radio"/> All The Time <input checked="" type="radio"/> After TCP Connected
<input type="button" value="APPLY"/> <input type="button" value="CANCEL"/> <input type="button" value="BACK"/>	



7a. Ask your IT department, "Please provide me an IP Address, Subnet Mask and Gateway so that my BF-430 Serial to Ethernet Connector can communicate to the BinMaster sensors." Put that data into the One Page Quick Setup. Change BAUD Rate depending on sensors (Modbus-9600; 3D scanner-115200, SmartBob-2400). Click Apply.

Important: The page will not load again because your CHIYU is now configured to a new IP address.

7b. To configure HART, put BAUD rate to 1200, Parity to ODD. Click Apply. Go back into your Network Adapter settings and select Obtain Automatically.



BinMaster Technical Support

support.binmaster.com

402-434-9102

technicalsupport@binmaster.com

924-0353 0525