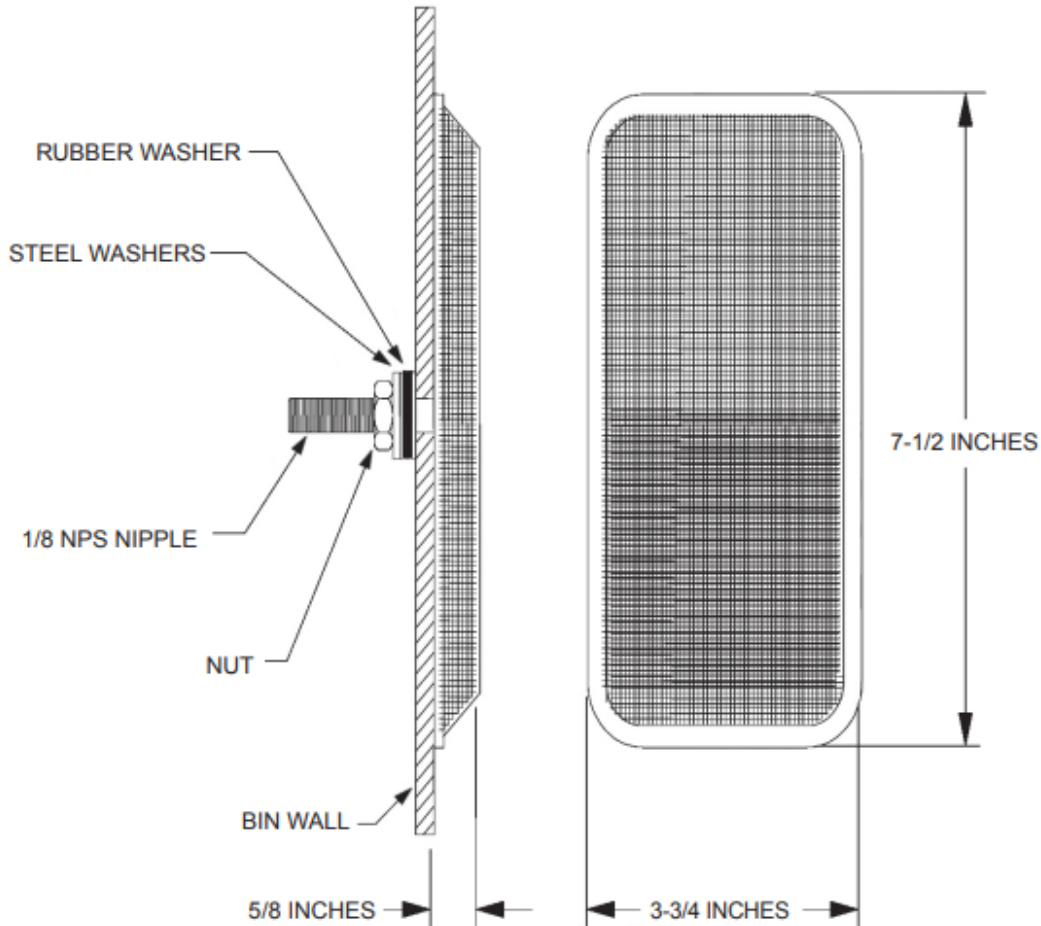




Air Pad Internal Mounting



INTERNAL MOUNTING INSTRUCTIONS

Drill 7/16" hole through bin wall and insert special tank nipple through the hole. Attach Airpad and lock into place with the locknut and rubber washer.

BinMaster: Division of Garner Industries

Lincoln, NE

402-434-9102

email: info@binmaster.com

www.binmaster.com