

This drawing is the property of Garner Industries. It is issued in confidence on the condition that it is to be returned on request and that it is not to be copied or reproduced in any way, or used in the manufacture of the subject matter thereof without the written consent of Garner Industries.

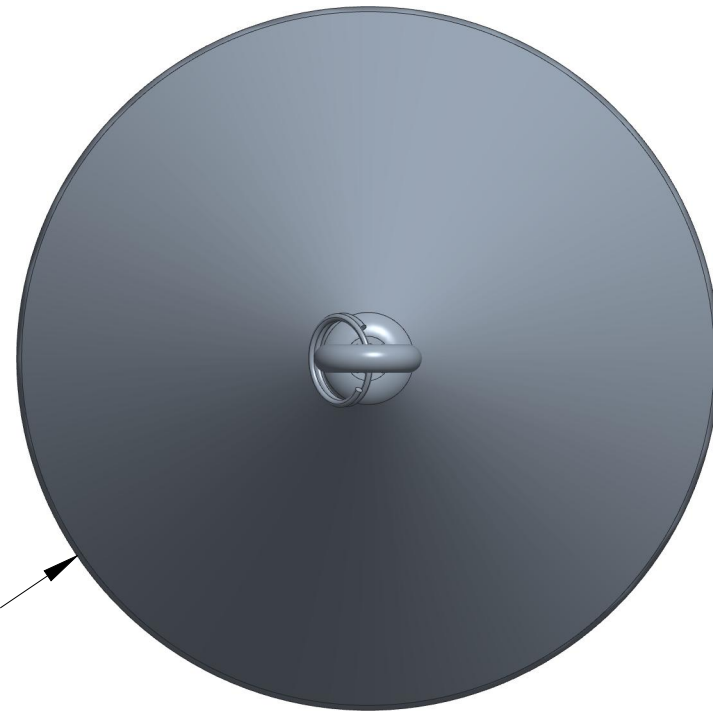
DIMENSIONS ARE IN INCHES UNLESS NOTED OTHERWISE



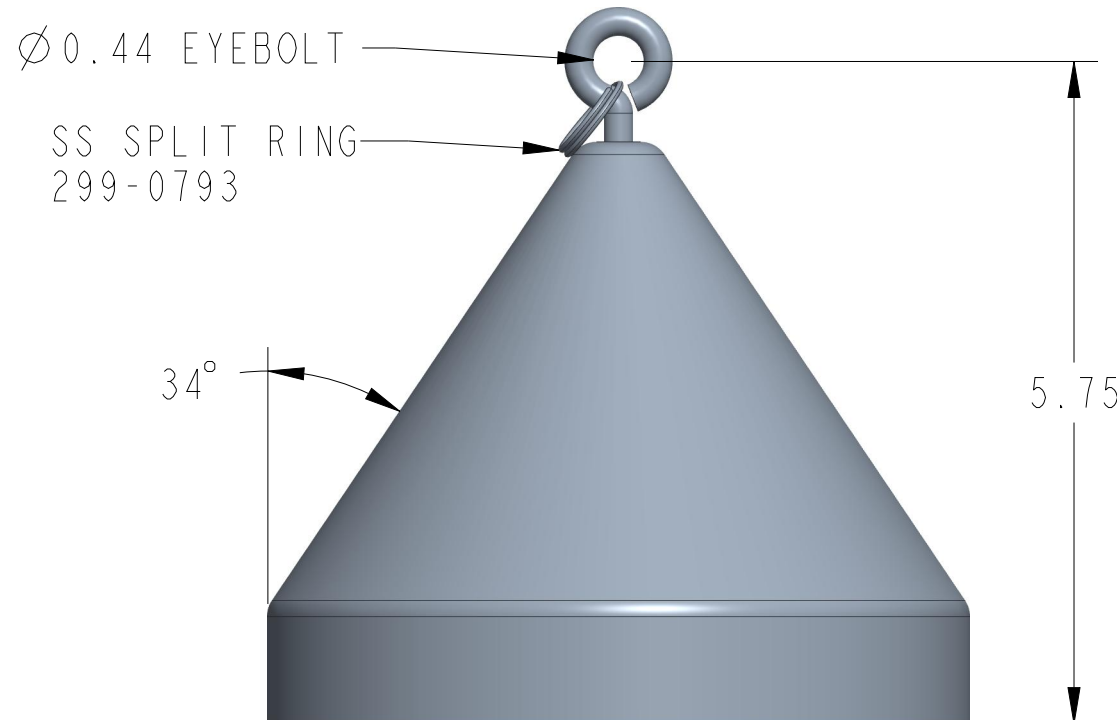
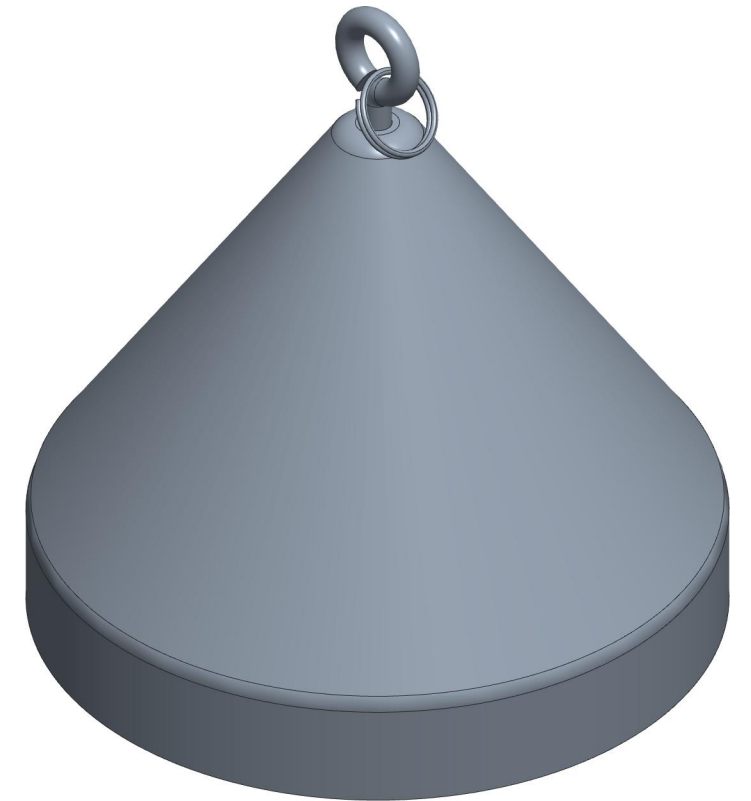
Division of Garner Industries / 7201 North 98th Street / Lincoln, NE 68507  
(402) 434-9102 / fax (402) 434-9144 \ www.binmaster.com

**ASSEMBLY ALSO INCLUDES (NOT SHOWN):**

PART No.	DESCRIPTION
165-0011	SLEEVE, NICKEL PLATED COPPER CRIMP, 1/16"
165-0026	STOP, SLEEVE ROUND ZINC COPPER
212-0042	CAP, SUREDROP, ACETAL
299-0584	THIMBLE CABLE 1/16" SS
299-0799	BALL STOP FOR SUREDROP ACETAL



Ø6.10 FLOAT, 416-0376



SCALE 0.600

REVISION  
A

**TITLE:** MTG DIM, CONE, 6.00, B4

**Model No.:** B4

**P/N:** 416-0376

**DWG No.:** 418-0067

**MATERIAL:** 316 SS

PAGE  
1 OF 1